

Welcome to



ePaperGallery.com

**“Next Generation Interactive ePaper”**

Mandar Joglekar  
Founder & CEO MyVishwa

# ePaperGallery Presents...



Next Generation  
Revenue Model  
for Newspapers



## Our Products & Services

ePaper

---

eAdsGallery

---

Content Management System  
( CMS )

---

Business Process Outsourcing  
(BPO)

Ahmednagar | Ahmedabad | Amritsar | Bangalore | Bhopal | Chandigarh | Chennai | Chicago | Delhi  
Jalandhar | Jammu | Jodhpur | Kolkata | Lucknow | Mumbai | Nagpur | New York | Philadelphia  
Aurangabad | Satara | Sindhudurg | Surat | Vadodara

### English

**KM3 ASHFORD EXTRA**

**THE ASIAN AGE**

**DAILY**

**DESITALK**

**DNA**

**early**

**hindustantimes**

**hi INDIA**

**Intelligent Pun**

**Khaleej Times**  
ONLINE

**MAIL TODAY**

**Media 24**

**METRO**

**MID DAY**

**mint**

**MIRROR**

**NEWSIndiaTIMES**

**NEWSNOW**

**PANPA**  
PACIFIC AREA NEWSPAPER PUBLISHERS ASSOCIATION

**The Philadelphia Inquirer**  
philly.com

**POST**  
Cambridge

**\*Sakaal Times**

**The EastAfrican**

**THE ECONOMIC TIMES**

**THE HINDU**

**The Independent**

**The Indian EXPRESS**

**THE TIMES OF INDIA**  
THIRUVANANTHAPURAM, ALCOVE 9, 2007

**THE JET**

**TODAYS ZAMAN**

### African

**TAIFA LEO**

### Arabic

**الرياضية**

### Bengali

Currently  
servicing more  
than 100  
publications  
from 15  
countries



# What are the Traditional Revenue Sources for Newspapers?

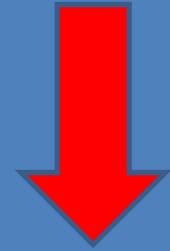
Newsstands Sale

Subscriptions

Advertising

# What is the Revenue Trend today?

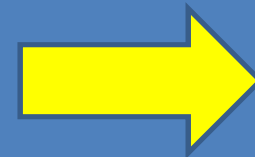
Newsstands Sale



Subscriptions



Advertising



# Where is the Ad Revenue Flowing?

Search Engines like  
Google

Networking Sites like  
Facebook , Twitter

Craigslist etc...

# Do You Want To Retain & Increase Your Revenue?

Turn Your Lemon  Lemonade



Publish Print Paper



Interactive ePaper

We at ePaperGallary

Convert Your

**Print  
Paper**



**Interactive  
ePaper**

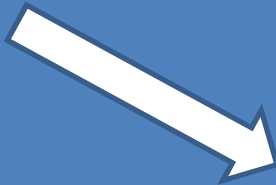
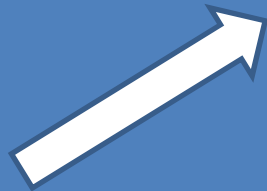
How?

Very Simple

You Provide



PDF file



We Convert into



Web Pages



Mobile Edition



RSS Feeds



Here is how your  
crisp clear ePaper  
will look like...



SPORTS, D1

## BIRDS MAKE BIG DEAL, TRADE BROWN

(No, not that one!)



# The Philadelphia Inquirer

philly.com

C 181st Year, No. 307 • City & Suburbs

Saturday, April 3, 2010 ★ Locally Owned & Independent Since 2006 ★ 75 cents

\$1 in some locations outside the metro area

Phillies PREVIEW 2010  
THE SECRETS OF THEIR  
SUCCESS



In Day 7 of our Phillies preview, the team's defense and newcomer Placido Polanco's performance at third base are the focus,

## Job Rolls Grow by 162,000

*A window on Phila. firm*



It was the biggest monthly increase in 3 years, but jobless rate remains 9.7 pct.

By Jane M. Von Bergen  
INQUIRER STAFF WRITER

The nation's payrolls expanded by 162,000 jobs in March, the largest monthly gain in three years, the government said Friday.

It marked only the third time in the last 27 months that the nation has added jobs. Despite the gains, the nation's jobless rate remained stubbornly high at 9.7 percent.

Among the winners last month was Randy Smith, 43, of Germantown, back at work at Allied Tube & Conduit Corp. in North

### Inside

■ Obama touts job growth. A5.

■ Treasury

We make your  
ePaper more  
Interactive ...

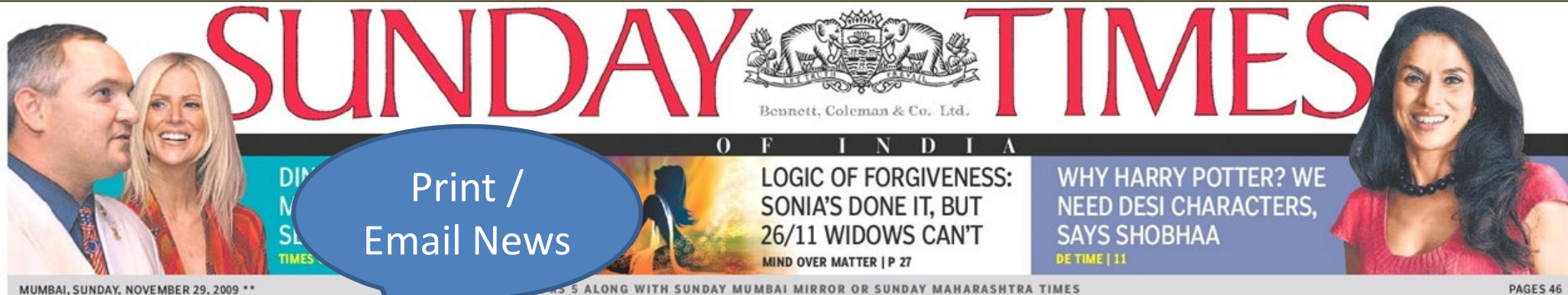


Select  
EditionNavigate  
to Section

Mumbai

Real Estate | Service | Jobs | Matrimony | Classifieds **NEW**

Business Life

[Main Page](#) [Times City](#) [Times Classifieds](#) [Times Nation](#) [Times Features](#) [Matrimonials](#) [Property](#) [Times Trends](#) [Times Global](#) [Times Sports](#) [DE Time](#)  
[All That Matters](#) [Special Report](#) [Times Review](#) [View From Venus](#) [Mind Over Matter](#) [Open Space](#)


**SUNDAY TIMES**  
Bennett, Coleman & Co. Ltd.  
OF INDIA

**Print / Email News**

**LOGIC OF FORGIVENESS: SONIA'S DONE IT, BUT 26/11 WIDOWS CAN'T**  
MIND OVER MATTER | P 27

**WHY HARRY POTTER? WE NEED DESI CHARACTERS, SAYS SHOBHAA**  
DE TIME | 11

MUMBAI, SUNDAY, NOVEMBER 29, 2009 \*\*

PAGES 46

## NEWS DIGEST

**Headley my half-bro, admits Pak PM's PRO**

Pakistan PM Yousuf Raza Gilani's public relations officer Danyal Gilani on Saturday acknowledged that Lashkar-e-Taiba terrorist David Coleman Headley is his half-brother, but clarified that they were not related to PM Gilani. **P 15**

**Elderly couple attacked:** A Nepali watchman and six armed accomplices assaulted an elderly couple in Matunga on Friday and escaped with cash and jewellery worth Rs 50 lakh. The couple is in hospital with severe injuries. **P 2**

**Train runs over four:** Four bodies were recovered from railway tracks at Bhayander a little after midnight on Friday. It is believed that they were run over by an express train. **P 7**

**'Dubai remittances won't be shaken':** Finance minister Pranab Mukherjee said he did not expect the Dubai financial crisis to have an "earth-shaking adverse impact on remittances". **P 15**

**SC curbs on recount:** Supreme Court has ruled that a margin of difference in the election results is by a single vote is not sufficient to order a recount. **P 1**

**12-yr-old's kidneys donated:** A 12-year-old girl became one of the youngest in the city after she collapsed because of a brain clot and passed away. Her kidneys were donated. **P 2**

**Top lawyers slam SC on Dinakaran:** Top lawyers berated the Supreme Court for its indecision on whether Karnataka

**Radiation mishap at Kaiga****45 Employees Sick As Heavy Water Poisons Cooler**

TIMES NEWS NETWORK

**Bangalore/Karwar:** In a nuclear accident that is bound to raise key safety concerns ahead of India's ambitious atomic expansion programme, about 45 employees of the Kaiga atomic power plant suffered radiation poisoning as radioactive heavy water from the plant contaminated drinking water meant for the staff.

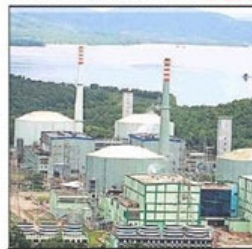
There was no official word from the usually secretive nuclear establishment but sources said that employees had been hospitalised after they experienced a mildly higher level of radiation than permissible on Friday after drinking from a water cooler near the open area of one of the reactors.

A tiny amount of radiation is normal, scientists said the contamination was unusual as the affected employees don't go inside the reactor area but work around it. "With no exposure to the reactor directly, it was surprising to see them with a mildly higher level of radiation," said Kaiga station director A M Gupta. Heavy water molecules have two atoms of deuterium instead of hydrogen in H<sub>2</sub>O can lead to high toxicity in humans, which could be fatal.

**cautious**  
**Thackeray bahu wish**

S Balakrishnan | TNN &amp; AGENCIES

**Mumbai/New Delhi:** Smita Thackeray, the estranged daughter-in-law of Shiv Sena chief Bal Thackeray, may get an entry into the Congress

**Contamination SCARE**

- ▶ 45 employees suffer radiation poisoning when radioactive heavy water contaminates drinking water
- ▶ The contamination is detected when some of the affected employees report a change in their pattern of urination
- ▶ Heavy water can lead to fatally high levels of toxicity in humans
- ▶ The people of Karwar are concerned and fear a possible fallout with consequences for their health

tion is normal, scientists said the contamination was unusual as the affected employees don't go inside the reactor area but work around it. "With no exposure to the reactor directly, it was surprising to see them with a mildly higher level of radiation," said Kaiga station director A M Gupta. Heavy water molecules have two atoms of deuterium instead of hydrogen in H<sub>2</sub>O can lead to high toxicity in humans, which could be fatal.

The Nuclear Power Corporation (NPC), which runs Kaiga, one of India's newer reactor complexes, did not respond to media queries. According to the deputy commissioner of Uttara Kannada N S Channappa Gowda, there were no casualties or injuries reported.

"The situation is on and we'll be monitoring it closely and we'll be any impact on their health."

[Photo Album](#)  
[Video Album](#)  
[News Comments](#)

associated the cooler and drinking water. Simultaneously water testing is on," said an NPC official, speaking on condition of anonymity.

The contamination was detected when some employees felt a change in the pattern of urination. They were rushed to the doctor and were tested and found normal. They even returned to work. But tests confirmed radioactivity in urine samples.

Sources said some used heavy water, used as a moderator in reactors that use natural uranium as fuel, had got into the drinking water cooler, causing the higher radiation.

NPC director Nageshwar Rao and a seven-member team comprising Atomic Energy Regulatory Board of India officials arrived in Kaiga on Saturday. NPC has not released the names of those hospitalised at its medical establishment at Malapur, 12 km from the reactor. It's not known whether they were scientists, technicians or workers. The people of Karwar are naturally concerned, hoping there won't be any impact on their health.

**Tech glitches mar Day One of online CAT****TESTING TIMES**

- ▶ **ACCESS DENIED** | Took more than 15 min to enter exam centres after identity checks
- ▶ **BOOT OUT** | Computers had trouble starting
- ▶ **PASSWORD REJECTED** | Often, the system rejected the candidate's unique password
- ▶ **CALLING IT QUITS** | On its own, the system prompted the examination to end
- ▶ **SHUTTING DOWN** | One candidate in Delhi said the system shut down on its own six times during the 2-1/2 hour test

- ▶ No. of students taking CAT on Day 1 of first online test | **10,000**
- ▶ No. of students taking CAT over 10-day period | **2.41 lakh**
- ▶ No. of exam centres in NCR | **21**
- ▶ Varying degrees of problems reported nationwide

There are bound to be some problems on the first day of such a huge exercise  
**S Deodhar**  
CAT CONVENER

TIMES NEWS NETWORK

New Delhi/Bangalore: Trama and anxiety pervaded scores of centres where candidates had gathered for the Common Admission Test (CAT) to enter India's top business and management schools, in

computers took ages to start and then in many cases, the password was rejected. The scene was not much different in the evening session.

"When the system refused to accept the password, I thought my world was crashing. I kept trying for a long

## BASIC in climate change talks

### West Must Share Burden Of Emission Cuts: PM

TIMES NEWS NETWORK





## NEWS DIGEST

## Headley my half-bro, admits Pak PM's PRO

Pakistan PM Yousuf Raza Gilani's public relations officer Danyal Gilani on Saturday acknowledged that Lashkar-e-Taiba terrorist David Coleman Headley is his half-brother, but clarified that they were not related to PM Gilani. **P 15**

**Elderly couple attacked:** A Nepali watchman and six armed accomplices assaulted an elderly couple in Matunga on Friday and escaped with cash and jewellery worth Rs 50 lakh. The couple is in hospital with severe injuries. **P 2**

**Train runs over four:** Four bodies were recovered from railway tracks at Bhayander a little after midnight on Friday. It is believed that they were run over by an express train. **P 7**

**'Dubai remittances won't be shaken':** Finance minister Pranab Mukherjee said he did not expect the Dubai financial crisis to have an "earth-shaking adverse impact on remittances". **P 15**

**SC curbs on recounting of votes:** The Supreme Court has ruled that a small margin of defeat in an election, even if it is by a single-digit figure, is not grounds to order recounting of votes. **P 15**

**12-yr-old's kidneys donated:** Dhruvi, 12, became one of the youngest organ donors in the city after she collapsed suddenly because of a brain clot and passed away. Her kidneys were donated. **P 2**

**Top lawyers slam SC on Dinakaran:** Top lawyers berated the Supreme Court for its indecision on whether Karnataka

# Radiation mishap at Kaiga

## 45 Employees Sick As Heavy Water Poisons Cooler

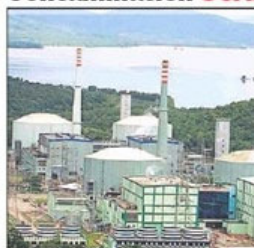
TIMES NEWS NETWORK

Bangalore/Karwar: In a nuclear accident that is bound to raise key safety concerns ahead of India's ambitious atomic expansion programme, about 45 employees of the Kaiga atomic power plant suffered radiation poisoning as radioactive heavy water from the plant contaminated drinking water meant for the staff.

There was no official word from the usually secretive nuclear establishment but sources said that employees had been hospitalised after they experienced a mildly higher level of radiation than permissible on Friday after drinking from a water cooler near the open area of one of the reactors.

Though a tiny amount of radiation

## Contamination SCARE



- ▶ 45 employees suffer radiation poisoning when radioactive heavy water contaminates drinking water
- ▶ The contamination is detected when some of the affected employees report a change in their pattern of urination
- ▶ Heavy water can lead to fatally high levels of toxicity in humans
- ▶ The people of Karwar are concerned and fear a possible fallout with consequences for their health

tion is normal, scientists said the contamination was unusual as the affected employees don't go inside the reactor area but work around it. "With no exposure to the reactor directly, it was surprising to see them with a mildly higher level of radiation," said Kaiga station director A M Gupta. Heavy water molecules have two atoms of deuterium instead of hydrogen in H<sub>2</sub>O. It can lead to high toxicity levels in

humans, which could be fatal.

The Nuclear Power Corporation (NPC), which runs Kaiga, one of India's newer reactor complexes, did not respond to media queries. According to the deputy commissioner of Uttara Kannada N S Channappa Gowda, there were no casualties or injuries reported.

"Investigation is on and we'll probe how the (heavy) water got into the drinking water: For now, we have

Photo Album  
Video Album  
News Comments

associated the cooler and drinking water. Simultaneously, water testing is on," said an NPC official, speaking on condition of anonymity.

The contamination was detected when some employees felt a change in the pattern of urination. They were rushed to the doctor and were tested and found normal. They even returned to work. But tests confirmed radioactivity in urine samples. Sources said some used heavy water, used as a moderator in reactors that use natural uranium as fuel, had got into the drinking water cooler, causing the higher radiation.

NPC director Nageshwar Rao and a seven-member team comprising Atomic Energy Regulatory Board of India officials arrived in Kaiga on Saturday. NPC has not released the names of those hospitalised at its medical establishment at Malapur, 12 km from the reactor. It's not known whether they were scientists, technicians or workers. The people of Karwar are naturally concerned, hoping there won't be any impact on their health.

# Tech glitches mar Day One of online CAT

## TESTING TIMES



- ▶ **ACCESS DENIED** | Took more than 15 min to enter exam centres after identity checks
- ▶ **BOOT OUT** | Computers had trouble starting
- ▶ **PASSWORD REJECTED** | Often, the system rejected the candidate's unique password
- ▶ **CALLING IT QUITS** | On its own, the system prompted the examination to end
- ▶ **SHUTTING DOWN** | One candidate in Delhi said the system shut down on its own six times during the 2-1/2 hour test

- ▶ No. of students taking CAT on Day 1 of first online test | **10,000**
- ▶ No. of students taking CAT over 10-day period | **2.41 lakh**
- ▶ No. of exam centres in NCR | **21**
- ▶ Varying degrees of problems reported nationwide

There are bound to be some problems on the first day of such a huge exercise **S Deodhar** | CAT CONVENER

TIMES NEWS NETWORK

New Delhi/Bangalore: Trauma and anxiety pervaded scores of centres where candidates had gathered for the Common Admission Test (CAT) to enter India's top business and management schools, in

computers took ages to start and then in many cases, the password was rejected. The scene was not much different in the evening session.

"When the system refused to accept the password, I thought my world was crashing. I kept trying for a long

# Congress cautious on Thackeray bahu wish

S Balakrishnan | TNN &amp; AGENCIES

Mumbai/New Delhi: Smita Thackeray, the estranged daughter-in-law of Shiv Sena chief Bal Thackeray, may get an entry into the Congress

# India sticks to BASIC in climate change talks

## West Must Share Burden Of Emission Cuts: PM

TIMES NEWS NETWORK



Showing 1 / 5



Kaiga\_1

**Tags:** Kaiga, Kaiga Nuclear Power Plant, Leakage in Nuclear Plant





Showing 2 / 5



Kaiga\_2

**Tags:** Kaiga, Kaiga Nuclear Power Plant, Leakage in Nuclear Plant



**KAIGA PROJECT SITE**





Showing 3 / 5



Kaiga\_3

**Tags:** Kaiga, Kaiga Nuclear Power Plant, Leakage in Nuclear Plant



**FULLY COMPUTERISED CONTROL ROOM**

Click on video to play.

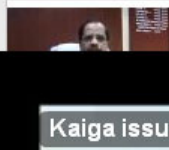
X Close



India Nuclear Leak P



Indian



Close

Kaiga issue raises security concerns



News  
Video





## Sudoku 1428

[X Close](#)

Here is the Puzzle. Good Luck !!

4	2	6	5	8	3	7		
				7				2
1					2			8
		9	8		6		2	5
2	4						7	
5			7		9	3		
9			1			2		6
6				3				
		2			7	1	4	

Play  
Sudoku

[How I Am Doing](#)[Show Answer](#)[Reset](#)



## New York Times Magazine Crossword Ease-e Does It

### ACROSS

- 1 miss  
5 Oil holder  
9 It's often vaulted  
13 Pact of '94  
18 Mrs. Shakes  
19 Shakes schem  
20 Bumme  
21 Stop over  
22 Inappropri a honeymoon  
26 Parkgoer's charge  
27 Italian home of the Basilica of San Francesco  
28 Mark Harmon action drama  
30 One side in the Pro Bowl: Abbr.  
31 Some bank deposits  
33 Health club lineup  
36 Item at a golf boutique?  
40 "Imitation is the sincerest form of television" quipster  
42 "Before the Devil Knows You're Dead" actress  
43 Shade of green  
44 With a run-down look  
45 Sperm targets

By Yaakov Bendavid  
Edited by Will Shortz

- 46 Camera-ready page  
48 Mi

- 82 Struggling

- 8 Baseballer and OSS spy

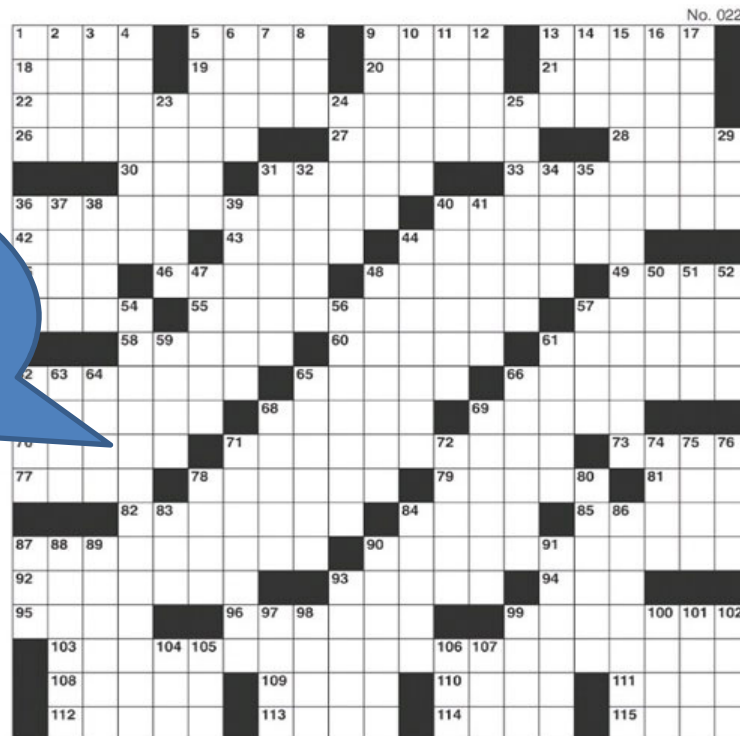
Click on the  
Crossword..

- 103 Bit of advice when packing anglers' lunches?  
108 Possible flight delay  
109 Proceeds  
110 Grand  
111 Itinerary segments: Abbr.  
112 These, in Madrid  
113 Convention handout, for short  
114 Showed  
115 Lows

### DOWN

- 1 TV alien's word  
2 Son of Seth  
3 Kick in, say  
4 Change the focus of, as an argument  
5 Face-to-face  
6 Bank quote  
7 Zero-star restaurant review?

- 17 Outfit  
23 Like some TV interviewers' questions  
24 Land with a red dragon on its flag  
25 Entered, as a classroom  
29 W-2 datum: Abbr.  
31 Made it home safely  
32 "There there"  
34 Dog in a cat comic  
35 Nev. neighbor  
36 On  
37 Go all over  
38 Yemen neighbor  
39 Loom  
40 Dinners likely to have leftovers  
41 Some major changes  
44 Scoundrel  
47 Alternatives to foils  
48 Send back to the Hill, say



- 50 Crooked senior  
51 Former Japanese capital  
52 Airport security measure  
54 Dating service in a northern German city?  
56 Dental hygienists, at times  
57 Pronoun designation: Abbr.  
59 Bearing  
61 1990s war locale  
62 Agile, for a  
63 Los \_\_\_ Reyes Magos  
64 Days of old  
65 Flock sounds  
66 Mathematician  
68 Rags-to-riches author Horatio  
69 iPod heading  
71 Divine  
72 Sarge's superior  
74 Direction at sea  
75 Narrow margin  
76 Like many conglomerates: Abbr.  
78 One of the housewives on "Desperate Housewives"  
80 Thumb's middle?  
83 2001 biopic  
84 Be sparing  
86 John Grisham best seller  
87 Smoke  
88 Disinclined  
89 Gourmet mushrooms  
90 Made up (for)  
91 It's measured in pound-feet  
93 Feed  
97 Line at a picnic?  
98 Neb. neighbor  
99 Accelerated bit  
100 Prefix with mom  
101 Current: Prefix  
102 Quagmire  
104 "The West Wing" chief of staff  
105 McKinley and Washington: Abbr.  
106 And other things: Abbr.  
107 "So that's it!"

## Bridge

By Frank Stewart

NORTH			
♠	K	J	3
♥	7		
♦	J	6	5
♣	A	K	J
WEST			
♠	6	4	2
♥	A	J	8
♦	10	9	7
♣	5	4	
EAST			
♠	10	5	
♥	K	9	4
♦	K	Q	8
♣	Q	10	7
SOUTH			
♠	A	Q	9
♥	Q	10	5
♦	A	4	
♣	8	2	
South	West	North	East
1 ♠	Pass	2 ♣	Pass
2 ♥	Pass	3 ♦	Pass
3 NT	Pass	4 ♣	All Pass
Opening lead — Choose it			

Unlucky Louie's next-to-oldest daughter was engaged, and his wife was making big plans. Cy the Cynic, who thinks the words "fiancee" and "finance" are too close for comfort, had his say.

"Keep it simple," the Cynic advised. "The length of the marriage is inversely proportional to the amount of money spent on the wedding."

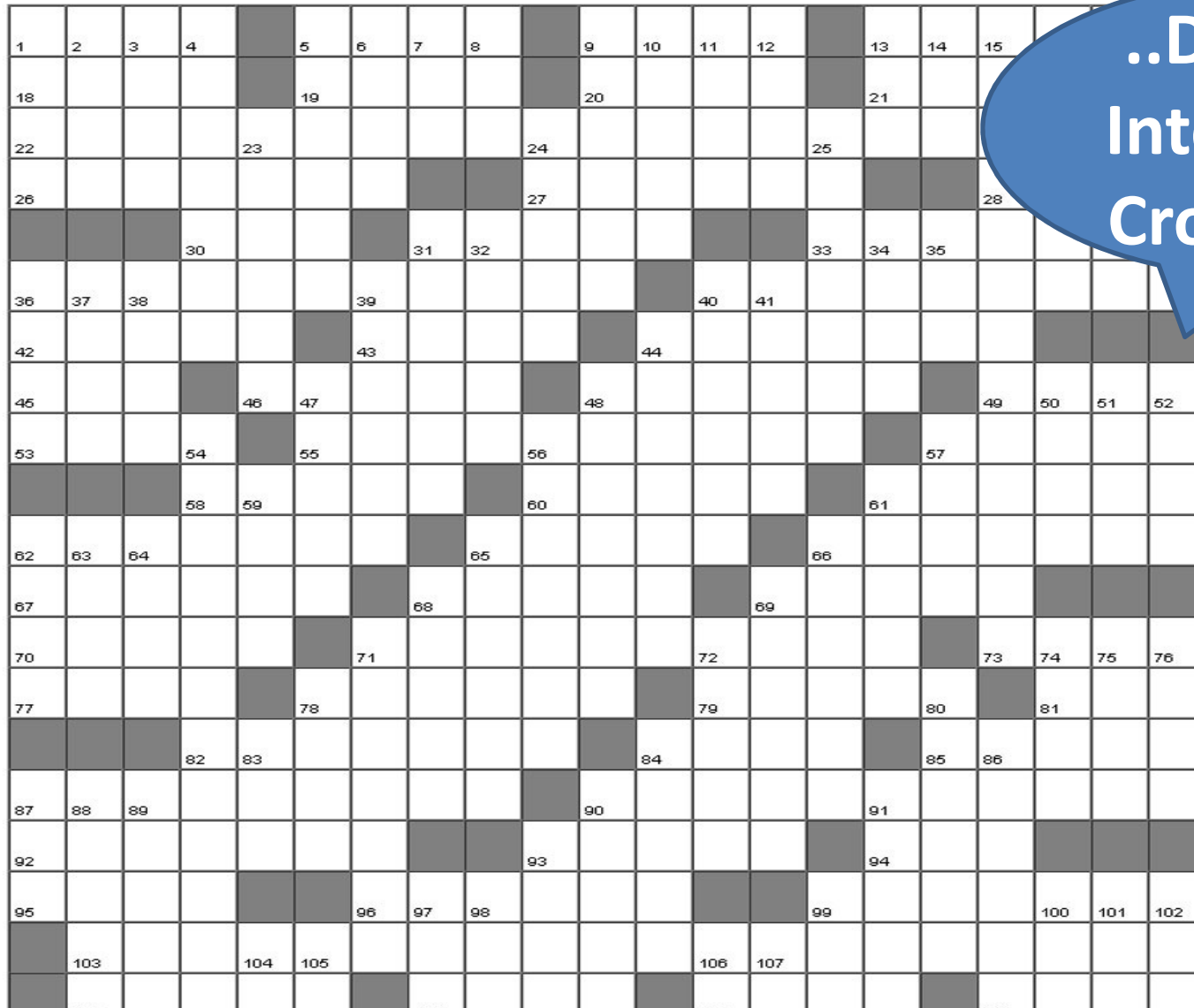
Cy also says that the success of any contract is inversely proportional to the number of bids taken to reach it. In a team match, Cy was North at one table and bid two clubs at his first turn. When South tried two hearts next, Cy jumped to three spades, and South bid game.

West led the ten of diamonds, and South took the ace and conceded a heart. He won East's trump shift in his hand, ruffed a heart, took the A-K of clubs, ruffed a club, and ruffed a heart to assure his 10 tricks.

At the other table, North bid three diamonds at his second turn, then supported spades,

Crossword 1021 (21 X 21)

Close



..Displays  
Interactive  
Crossword



# Interactive ePaper Revenue Sources



# Major Revenue Sources

Advertisement

Real Estate

Jobs

Classifieds

How  
Interactive ePaper  
can increase your  
Ad revenue?

# ePaperGallery

provides variety of

interactive tools

These tools  
add more  
value & life  
to printed Ads



# 1. Revenue from Advertisement

information desk at the flower show, which ends today.

**After 25 years,  
time to let it be.**

## Jane Pepper's farewell tour at flower show

ing a bittersweet time of it. She has been part of PHS since 1976, when she signed on as a flower show volunteer.

"My thoughts and emotions are a jumble of happy and sad," Pepper says.

On the one hand, she will soon have time to travel and reconnect with her multi-continental family; ride her Trek 7200 hybrid bicycle; take spirited walks with Angus and Paris, her beloved poodles — and reinvent herself, which she has definite ideas about.

On the other hand — and this is when Pepper chokes up so badly she can hardly talk, right in the middle of the Convention Center, as she's making her way See **PEPPER** on A14

### BUSINESS

#### An urban makeover

A public-housing project was razed, and the Hawthorne neighborhood it had anchored began to transform. **D1.**

### WEATHER

**High 55, Low 36**

Sunny, warm, and dry through Tuesday. Full report and exclusive NBC10 EarthWatch forecast. **B15.**



**The drop is attributed to several strategies, especially police foot patrols in the riskiest areas.**

By Allison Steele  
INQUIRER STAFF WRITER

**O**n one side of Chris O'Leary's house sits an empty apartment building, boarded up since rampant drug dealing closed it years ago. On the other side is the home where O'Leary's 19-year-old neighbor lived until he was shot in an apparent drug dispute in 2008.

It's no surprise to O'Leary that his house sits in the city's hottest crime spot — six square blocks in Frankford that racked up 84 robberies, 69 aggravated assaults, and 3 homicides in three years.

But things are changing, he said.

"It's better now than it was," said O'Leary, who moved to the area 10 years ago. "There was a time in the late '90s when there were three or four guys selling drugs on every corner, and you don't see that anymore."

Police say crime is down in O'Leary's neighborhood and in other rough areas, thanks to crime-fighting strategies and particularly a network of foot patrols that were put in place last year in the city's most dangerous places.

The sector where O'Leary lives, bordered by Frankford Avenue and Arrott, Leiper, and Harrison Streets, is one of 60 hot spots identified in a Temple University study as the city's highest-volume crime areas. Police used the analysis to assign 200 officers to foot patrols across the city. Since the study was completed last year, that number has changed as captains have shifted the patrols depending on each district's needs and the number of officers available at a given time.

See **FOOT PATROLS** on A15



**Officer Christopher McBaine**, on patrol in Frankford, checks an open door at a house being rehabbed.

### INSIDE

**Map:** The 60 highest-volume crime spots in the city. **A15.**

**Table:** Violent crime statistics by police district. **A15.**



and Kristen A. Graham  
INQUIRER STAFF WRITERS

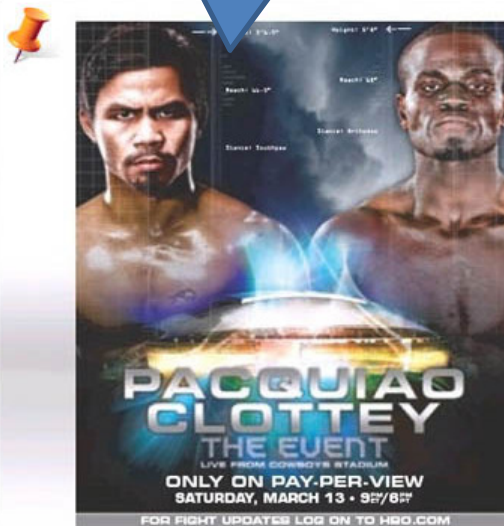
On Dec. 3, as Asian stu- dents endu- ries of a de-

they could leave, then instructed to return to class.

In the nurse's office, which injured Chinese studies one with a debate arose all 911. Filled, not by a elor pool. 3, ns ac- cu- it's peak

**Click on the  
Ad to visit  
Advertiser's  
Website**

ADVERTISEMENT



**Don't have XFINITY TV?  
Call 1-800-XFINITY today.**

**xfinity**

Restrictions apply. Not available in all areas. Requires digital converter. Presented by Top Rank, Inc. in association with Cowboys Stadium. Card subject to change. Call for details. Comcast © 2010. All rights reserved. ©2010 HBO Pay-Per-View®, a division of Home Box Office, Inc. and Top Rank, Inc. All rights reserved. HBO PPV®, HBO® and related channels and service marks are the property of Home Box Office, Inc.





Search Site

What is XFINITY

TV & Movies

Internet

Voice

Choice & Control

XFINITY Extras

Buy XFINITY ▶



## XFINITY HD Triple Play

The best HD for the smartest price. Get the XFINITY HD Premier XF Triple Play and enjoy more HD choices in the best HD picture quality.\*

**Buy now and get a \$200 Visa Prepaid Card.**

BUY XFINITY NOW ▶

PAUSE ||

Terms And Conditions

Welcome

**HD Triple Play**  
**\$200 Visa Credit**

**XFINITY Internet**  
**\$19.99/mo**

**XFINITY TV**  
**\$39.99/mo**

**XFINITY Voice**  
**\$19.99/mo**

Customer Guarantee

### On Comcast

El Online  
Fandango  
DailyCandy  
Comcast Sportsnet  
Fearnert

### On XFINITY TV

Full TV Episodes  
Full Movies  
What's on TV  
What's On Demand  
News & Gossip

### On Comcast.com

Comcast customerCentral  
Moving  
Comcast Bundles  
Comcast Business  
Comcast Blog

### Customer Support

Pay My Bill  
Account Services  
Live Help Chat  
Contact Us

### Help Links

Spam  
Security  
Forgot Password  
Signing In

\*HD picture quality rating based on Comcast Digital Cable service in a September 2008 study of the top HD channels by Frank N. Magid Associates.

Not all products and services are available in all areas. HD programming limited to programming provided to Comcast in HD format. HD choices include HD channel lineup and programming available On Demand. On Demand selections subject to charge indicated at time of purchase. Not all programming available in all areas. Service (including 911/emergency services) may not function after an extended power outage. EMTA required. Internet speed comparisons for downloads only. Actual speeds vary and are not guaranteed. Enhanced fiber-optic network incorporates fiber and coax. XFINITY Internet service required for Xfinity Security Suite. Not all systems compatible. Pricing changes may apply to use of Comcast mobile app. Please check with your service. Additional features require XFINITY.



Advertisers are  
ready to pay min.  
20% more for the  
targeted traffic to  
their websites



## 2. Revenue from Real Estate

**Toll Brothers**  
America's Luxury Home Builder®

# It's Only a Buyer's Market



Click on the Ad to  
see more details  
about the  
property along  
with Photos &  
Videos

**Decades of Success. Proven Stability. Extraordinary Homes.**

• BUCKS COUNTY •

**Upper Mountain Estates**  
Homes from the upper \$600,000s  
Buckingham • (215) 794-5400

**Plumstead Chase**  
Now Open!  
Homes from the mid-\$500,000s  
New Hope • (215) 794-5400

**Villages at Buckingham**  
Carriage homes from the \$300,000s  
Buckingham • (215) 345-4400

**Spring Valley Estates at  
Buckingham/Doylestown Woods**  
Homes from the \$900,000s

• CHESTER COUNTY •

**Creekside at Byers Station**  
Quick Delivery Homes Available  
Carriage homes from the \$300,000s  
Chester Springs • (610) 458-5567

**The Executives at Byers Station**  
Hurry! Last Chance!  
Homes from the \$400,000s  
Chester Springs • (610) 458-9448

**The Summit at Byers Station**  
Just Opened! Pre-Construction Pricing  
Homes from the upper \$400,000s  
Chester Springs • (610) 458-2001

**Woodledge at Whitford Hills**

• MONTGOMERY COUNTY •

**Huntingdon Place**  
Multi-Family Community of the Year®  
Condominiums from the \$200,000s  
Huntingdon Valley • (215) 938-8981

**Regency at Providence**  
Final Section Open For Sale.  
Don't Miss Out!  
Homes from the \$300,000s  
Oaks • (610) 933-4600

• CENTER CITY •

**Naval Square**  
One of Philadelphia's

• DELAWARE COUNTY •

**Estates at Chadds Ford**  
Unionville-Chadds Ford Schools  
Homes from the low \$700,000s  
Chadds Ford • (610) 558-4700

**Estates at Garnet Valley**  
Walk to All Garnet Valley Schools  
Homes from the low \$700,000s  
Glen Mills • (610) 358-5877

• NEW CASTLE COUNTY, DE •

**Greenville Overlook**  
Just Opened! Pre-Construction Pricing  
Homes from the \$600,000s

## Photo Album

Rittenhouse Square -

EN #247418

View More Postings X Close



Rittenhouse Square - 1 to 3 Bedroom Condominium Home Its new Its stunning and its on the square who wouldnt be pleased to own at 10 Rittenhouse Square

View Count: 6 Posted By: Himanshu Jain

☆☆☆☆☆ (0)

Tell a Friend Add to Favorites Report Abuse

\$ 5,000+

New

Public URL: <http://www.myvishwa.com/Public.htm?NuggetName=MyPI>

### Summary

Furnished	Semi Furnished
Bedroom	2
Bathroom	2
Total Number Of Floors In The Building	2
Posted By	Builder

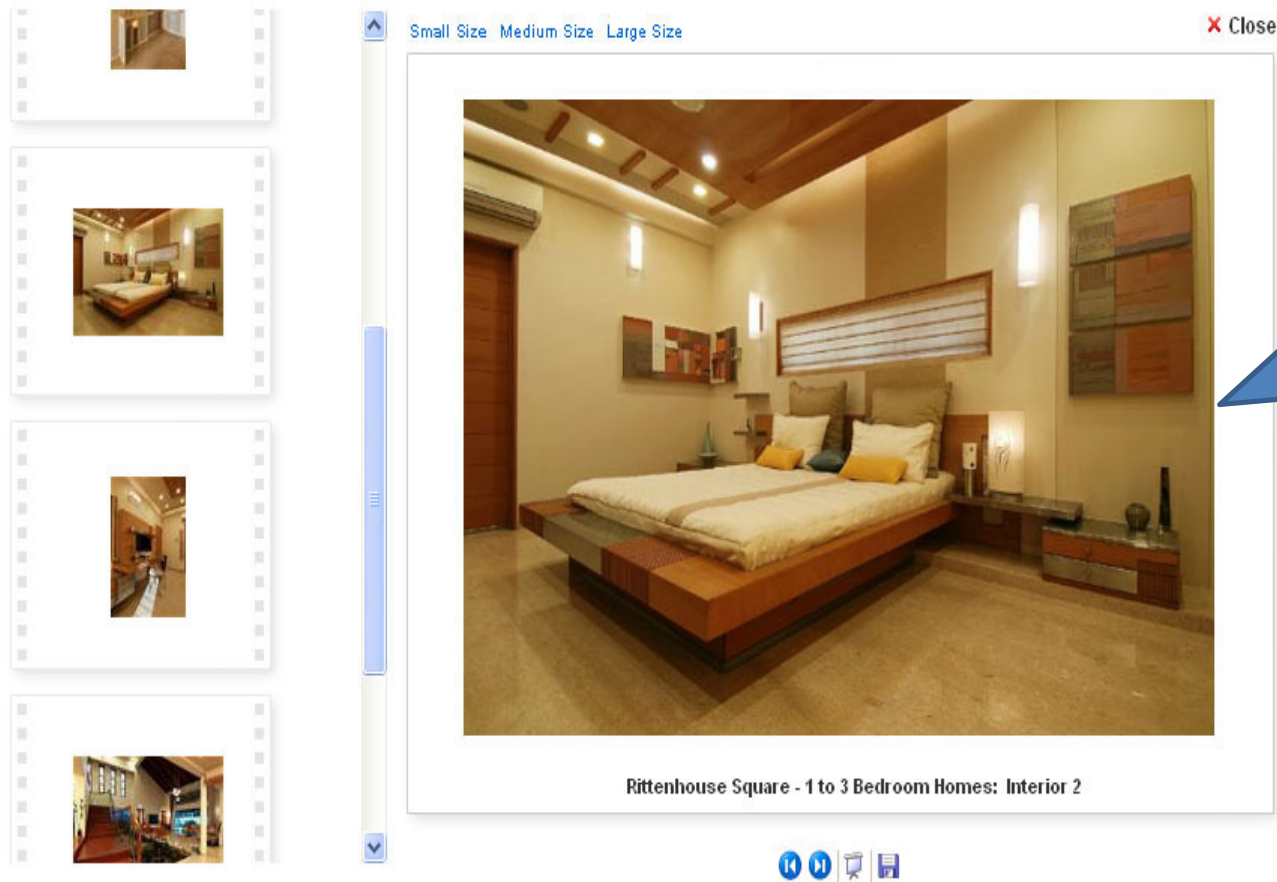
## Property detail information

### About Area & Price

Covered Area	2000
Select Area Type	Covered Area
Transaction Type	New Property

### Additional Details







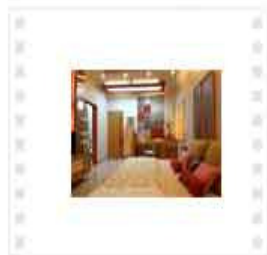
Small Size Medium Size Large Size

Close



Rittenhouse Square - 1 to 3 Bedroom Homes: Interior 4





Small Size Medium Size Large Size

X Close



Rittenhouse Square - 1 to 3 Bedroom Homes: Interior 5



Advertisers are ready  
to pay min.

\$25-50 extra for these

**Interactive Features**





# **3. Revenue from Job Ads**

Click on Job Ad  
and it will display  
more job details



# healthcare

## Calendar of Upcoming Events

### Monday, March 8, 2010:

• **Transformations Holistic Learning Center**  
Topic: Seijaku Roshi – Evening Teaching and Meditation  
Location: Transformations Holistic Learning Center, Voorhees, N.J.  
Time: 7 to 8 p.m.  
For more information: [www.readytotransform.com](http://www.readytotransform.com)

### Tuesday, March 9, 2010:

• **Transformations Holistic Learning Center**  
Topic: Caring Circle  
Location: Transformations Holistic Learning Center, Voorhees, N.J.  
Time: 7:30 to 10 p.m.  
For more information: [www.readytotransform.com](http://www.readytotransform.com)

### Wednesday, March 10, 2010:

• **The Wellness Community of Philadelphia**  
Topic: TWCP Jokefest for People Affected By Cancer  
Location: The Wellness Community of Philadelphia, Falmouth Park  
Time: 6:30 to 8 p.m.  
For more information: [www.twcp.org](http://www.twcp.org) and 215-879-7733

### Thursday, March 11, 2010:

• **Transformations Holistic Learning Center**  
Topic: Experience Change Without Fear – Carole Gold  
Location: Transformations Holistic Learning Center, Voorhees, N.J.  
Time: 7:30 to 9:30 p.m.  
For more information: [www.readytotransform.com](http://www.readytotransform.com)

### Friday, March 12, 2010:

• **The Wellness Community of Philadelphia**  
Topic: Ceramics Workshop for People Affected By Cancer  
Location: The Anne McCreesh Center, Lansdale, Pa.  
Time: 1 to 2:30 p.m.  
For more information: [www.twcp.org](http://www.twcp.org) and 215-879-7733

• **The Wellness Community of Philadelphia**  
Topic: Food For Life – A Program of The Cancer Project (Four-part Series)  
Location: The Wellness Community of Philadelphia, Falmouth Park  
Time: 6:30 to 8:30 p.m.  
For more information: [www.twcp.org](http://www.twcp.org) and 215-879-7733

### Monday, March 15, 2010:

• **Transformations Holistic Learning Center**  
Topic: Veronica Parker – Evening Meditation  
Location: Transformations Holistic Learning Center, Voorhees, N.J.  
Time: 7 to 8 p.m.  
For more information: [www.readytotransform.com](http://www.readytotransform.com)

### Tuesday, March 16, 2010:

• **Transformations Holistic Learning Center**  
Topic: Angel Readings Kathy Milano and Mary Law  
Location: Transformations Holistic Learning Center, Voorhees, N.J.  
Time: 4:30 to 8:30 p.m.  
For more information: [www.readytotransform.com](http://www.readytotransform.com)

### Friday, March 19, 2010:

• **The Wellness Community of Philadelphia**  
Topic: An Introduction to Jin Shin Jyutsu for People Affected By Cancer  
Location: The Wellness Community of Philadelphia, Falmouth Park  
Time: 11:30 a.m. to 1 p.m.  
For more information: [www.twcp.org](http://www.twcp.org) and 215-879-7733

### Friday, March 19 to Sunday, March 21, 2010:

• **Transformations Holistic Learning Center**  
Topic: Havelle Hendrix – Getting the Love You Want Couples Weekend  
Location: Doubletree Hotel, Mt. Laurel, N.J.  
Time: Times Vary  
For more information: [www.readytotransform.com](http://www.readytotransform.com)

Click on Ad to  
see more  
details about  
the Job

### Wednesday, March 24, 2010:

• **Philadelphia Area Association for Health Care Recruiters**  
Topic: March Meeting: The Mindset of Healthcare Candidates Today  
Location: Philadelphia Inquirer Schuylkill Printing Plant, Conshohocken, Pa.  
Time: 9 a.m. to 12 p.m.  
For more information: [www.paahcr.com](http://www.paahcr.com)

### Friday, March 26, 2010:

• **The Wellness Community of Philadelphia**  
Topic: Line Dancing for People Affected By Cancer  
Location: The Wellness Community of Philadelphia, Falmouth Park  
Time: 3 to 4 p.m.  
For more information: [www.twcp.org](http://www.twcp.org) and 215-879-7733

• **The Wellness Community of Philadelphia**  
Topic: Food For Life – A Program of The Cancer Project (Four-part Series)  
Location: The Wellness Community of Philadelphia, Falmouth Park  
Time: 6:30 to 8:30 p.m.  
For more information: [www.twcp.org](http://www.twcp.org) and 215-879-7733

### Saturday, March 27, 2010:

• **The Wellness Community of Philadelphia**  
Topic: "Frankly Speaking About New Discoveries in Cancer Treatment"  
Location: The Wellness Community of Philadelphia, Falmouth Park  
Time: 9 a.m. to 12 p.m.  
For more information: [www.twcp.org](http://www.twcp.org) and 215-879-7733

• **Transformations Holistic Learning Center**  
Topic: Elsie Kerns – Energy Medicine for Women  
Location: Transformations Holistic Learning Center, Voorhees, N.J.  
Time: 9 a.m. to 5 p.m.  
For more information: [www.readytotransform.com](http://www.readytotransform.com)



## Quick Tips

### Thank you letter

- During the interview process, ask the people who meet with you for their business cards so you'll have their contact information.
- Within two days, send a thank you note to every person who interviewed you. Mail a letter after the first round, and then use email if you are interviewed by the same person multiple times.
- In a thank you letter, show appreciation for the interviewer's time and interest in you. Explain why you are ideal for the position, but don't sound pushy or desperate.
- Edit your thank you note. Even hand-written cards should be free of grammatical errors, misspellings and typos.
- If you decide you'd like to pull yourself out of the running, alert the employer.

See more career tips on

QA

## Question of the week

### Answers to Last Week's Question

#### QUESTION:

Does your company monitor Internet usage?

#### ANSWERS:

I sure hope not! 16.7%  
I don't know. 11.9%  
Yes, and some of my favorite sites are blocked. 71.4%

### NEW QUESTION

“Does your company do a good job of communicating to its employees?”

TO REPLY GO TO  
**philly.com/jobs**

## career training & education

**AMAZING OPPORTUNITY!**  
Start training today for a new career as a **PHARMACY TECHNICIAN!**  
High School Diploma or GED required  
**Call NOW! 800-997-4626 dept. 234**  
CHI Institute - Broomall Campus  
1991 Sprout Rd, Suite 42 Broomall, PA 19008  
CHI Institute - Franklin Mills Campus  
177 Franklin Mills Blvd., Phila, PA 19154

A new career will change your life!  
Train to be a Massage Therapist  
in as few as 7 months!

Call NMTI  
**800-251-0813**



## WANTED COMPANY SECRETARY

Jog Engineering Limited

<b>Experience:</b>	5 - 7 Years
<b>Industry:</b>	Engineering co. (const.)
<b>Job Type:</b>	FullTime
<b>Experience Level:</b>	Executive
<b>Posted Date:</b>	8/17/2009
<b>Expiry Date:</b>	8/16/2010

### Job Details

We are a public company, with a 56-year track record in the fields of engineering and multi-faceted construction. We have been listed on the BSE since 1985.

We now need to appoint a Company Secretary.

The person we are looking for has to be a qualified Company Secretary, ideally with about five years post-qualification experience in a public, listed Company.

Alternatively, the person may also be a fresh, newly qualified member of the Institute of Company Secretaries of India. In such case he shall join as an Assistant Company Secretary to get elevated as a Company Secretary after achieving sufficient experience under the guidance of our retired Company Secretary and a practicing Company Secretary.

Salary and perks shall be commensurate with qualifications and experience.

Please apply in strict confidence to:

The Chairman & Managing Director,

Jog Engineering Limited,

4th Floor, Jog Center,

Wakdewadi, Pune 411 030

Telephone: +91 20 2581 5930

Email: [madhavvjog@gmail.com](mailto:madhavvjog@gmail.com)

**Company Name:** Jog Engineering Limited

**Address:** 4th Floor, Jog Center,  
Wakdewadi, Wakdewadi, Pune, Maharashtra, 411 030, India

**Email Address:** [madhavvjog@gmail.com](mailto:madhavvjog@gmail.com)

**Telephone:** +91 20 2581 5930

Employers are ready

to pay min.

\$25-50 extra for

detailed Ad.



# **4. Revenue from Classifieds**

Monday, April 5, 2010

## homes for rent

### NORTH PHILADELPHIA RENT

**NICE TOWN** 4Br/2Ba \$750  
backyard porch. Complete renov. Available immediately. Call: 267-808-9792

### OLNEY RENT

58xx N. 5th St. 3Br \$900+utils  
4 car driveway. Call (215)360-7318

### HUNTING PARK/NICETOWN RENT

**JUNIATA** 2br \$800  
fin bsmt, cent air. 267-584-8617

### GERMANTOWN RENT

49xx Stenton Ave 1Br & 2Br **SPECIAL**  
Move-in before May 15, get 1/2 mo free.  
24 hr maint, close to transp 215.438.3382  
5635 Nelson St 2Br \$650+  
w/w, open front porch, bk yd. 267.331.6811  
57xx Anderson St 3Br \$800  
hwd flrs, yd, front porch (215)280-9200  
Chew & Price 3Br \$900  
w/w, 215-473-8049

### FRANKFORD RENT

Frankford Vic 2Br, 1 flr Ranch \$800  
Handicap Accessible, Sec. 8 & TURN ok,  
Ask for Tony, 215-681-8018

### NORTHEAST PHILADELPHIA RENT

46XX Benner St. 3br/1.5ba \$995  
Wissinoming. NE Philly twin house.  
hardwood on 1st floor, eat-in kitchen, finished basement, covered front porch, fenced backyard. Spacious, nice and clean. Three months to move in.  
215-378-77223

### CONSHOHOCKEN RENT

CONSHOHOCKEN 3Br/2.5Ba  
Must see! \$1850/mo. 215-485-0215

### DELAWARE COUNTY RENT

Brookhaven, PA 3Br/2.5Ba \$1200  
EIK, fin. bsmt, deck, lg yard, 215.803.2219  
UPPER DARBY 3Br \$1100  
On trans w/w cpt Sec8 ok 610-459-3990  
Upper Darby 3BR Row \$850  
w/w carpet, good cond. (610)795-7408

### MONTGOMERY COUNTY/SUBURBAN RENT

Ft. Washington 3Br/1.5Ba \$1,900/neg.+  
utils, beaut. rancher, new kitchen, finished bsmt, wlk to train/schools 610.459.8090

## resorts/rent

### SEASHORE/RESORT APTS

**OCEAN CITY** 3BR Weekly  
7/31-9/25, Near beach, ocean view, furn, 2nd flr, ac, w/d, d/w, tv, (215)630.9483

### SEASHORE/RESORT RENT

Brigantine 2br 6/20-27 \$1150 Aug \$1300  
/wk pets ok, (BrigB.com) 856-217-0025

### GERMANTOWN APTS

236 W. WALNUT LN eff/c/1BR fr \$540  
**APRIL SPECIALS!** HISTORIC Apts  
Close to transp 215-849-7260

5201 Wayne Ave. 1 BR & 2BR  
On site Lndry 267.767.6959 Lic# 311890  
601 Church Lane lrg 1 & 2 br apts  
lic#494336, nr LaSalle Univ, 267.767.6959

**GERMANTOWN**  
Studios, 1 & 2 BR Various \$\$  
Beautiful Apts. 215-849-1622

### WALLINGFORD BEAUTIFUL APTS.

★ ★ ★  
**GREAT MOVE-IN SPECIALS**  
Make our home your next home  
215-247-5614 / 215-284-5396

### CHESTNUT HILL/MT. AIRY APTS

11xx E Sydney St. 2BR/1.5BA \$925  
newly renovated, quiet, (267)804-0225

61W. Sharpnack St 2br/1ba \$800+util  
1st floor, recently renovated, w/w carpet,  
w/d hookups, backyard (267)879-8897

63xx Germantown Ave lrg 2Br \$675/mo  
**MOVE-IN SPECIAL.** low utils, w/w cpt,  
close to transp., off st. prkg. 215.848.2220  
67xx Blakemore St modern 1br \$650+  
remodeled, No pets (215)477-8769

**MT AIRY Apts start'g @ \$400 & UP**  
10 loc's. Beaut Studios 1&2br. Up to  
**2 MONTHS FREE** based on good credit  
(restrictions apply). 215-247-5614

### FRANKFORD APTS

4711 Leiper St. Studio & 1BR lic#493309  
newly rehab.bkyd, 267-767-6959

### NORTHEAST PHILADELPHIA APTS

441 Tomlinson Rd. 3br/2ba Luxury  
Condo \$1000+ utils, (267)312-1429

95xx James St. 2Br/2Ba \$1150/mo  
Rivers Bend Condo, loft, fireplace, C/A,  
private laundry, garage. 215-285-8383

NE - 1br \$600 & 2br \$850 +utils  
2br- hwd flrs, both renov 215.518.6631

**OLD BUSTELTON/WELSH** 2br \$725+  
1st flr Dplx sep ent pvt Lndy 267.825.4043

### BUCKS COUNTY APTS

Warrington 2BR \$850+ util  
V6, lthr, 49K mi, sunroof, 215-715-4647

### DELAWARE COUNTY APTS

Clifton Hts 1Br \$669.50&up  
ASK ABOUT OUR SPRING SPECIAL!  
PARK GLEN APTS-2 S Glenwood Ave spa-  
cious incl heat & hw Secured bldg near  
transp McKay RE 610-352-9026

**MEDIA Vicinity 1 & 2 BR \$669.50&up**  
ASK ABOUT OUR SPRING SPECIAL!  
PROV CT Incl ht & hw Dir:US 1 (Balt. Pk) to  
252N 1 mi to State Rd R to model in F bldg.  
Furn apts avail. McKay RE 610-352-9026

Primos 1Br \$669.50 & up  
ASK ABOUT OUR SPRING SPECIAL!  
221 Oak Ave OAK MANOR APTS Ht & h/w  
incl nr transp McKay RE 610-352-9026

Upper Darby 1BR/Efficiency \$700/\$600  
Incl water/heat, great loc. 484-904-5834

UPPER DARBY 2BR \$750+ utils  
storage w/d h/wm, car out fresh paint

## automotive

### CADILLAC

Sedan DeVille DTS 2003 \$12,500  
49k mi, extended warranty 610.874.6059

### CORVETTE

Corvette Convertible 1987 \$7500/obo  
Call 610-467-0203/ 484-550-0910

### LAND ROVER

Range Rover 2001 \$8950  
Luxury 4 door with sunroof, original miles,  
garage kept, like new! (not exaggerated)  
senior citizen owner. Call 215-627-1814

### LEXUS

ES 300 2000 \$6200  
Platinum package, new tires, brakes  
& rotors, 87K miles, Call 609-707-9103

SC 430 Conv. 2005 \$25,575 obo  
45K mi, exc cond, loaded, 215-837-0037

### LINCOLN

LS 2001 \$6985  
luxury 4 door sunroof full power orig. mi.  
"Like New" woman driver. 215-922-6113

### NISSAN/DATSUN

ALTIMA SE 2004 \$9200  
V6, lthr, 49K mi, sunroof, 215-715-4647

Versa 2009 \$13,500  
4Dr hatchback, 5K, like new 215.235.5550

### PONTIAC

66 many options, clean

COROLLA  
S-Type

Volvo V50  
Wagon

### RV SHOWS,

Coachman Class  
32 foot, 13K mi.

### ACCESSORIES, PARTS

7x16 cargo trailer, includes k  
ball hitch, rear liftgate and sl  
\$3,500. 484-680-5602 or 610-405

### ANTIQUE & CLASSIC CARS

BUICK WILDCAT 1965 Convertible, red/  
white top, like nw, must see 215-726-0307

Rolls Royce Silver Cloud 1972 \$12,000  
excellent condition, 46K original miles, 2  
tone brown, Call 215-744-2683

### AUTOS, TRUCKS WANTED

TOP \$\$\$ Paid for Complete  
Junk Cars 267-972-1398

Click on  
Auto Ad & See  
more details  
about Car with  
Photos on  
eAdsGallery

## low cost cars & trucks

Audi A6 1995 \$3,500  
fully loaded, automatic. Call 215-927-2521  
Buick Roadmaster LTD 1995 \$3500  
43K mi, runs new, insp, 215-620-9383  
Cadillac Sedan DeVille 1997 \$5,250  
Excellent condition 59K mi 215-990-2611

### PA E15

CAD Sedan Deville 1977 \$1500  
needs starter, 90K miles, 302-652-3347

CHEVY Impala 2002 \$3900  
many options, 98K mi, 215-549-6986

er Concorde 1996 First \$1,199  
on Special, 4dr, auto, good on  
100%, Won't Last! 215.520.7890

repid ES 2000 \$2875  
er, lthr, 6cd 267.592.0448

SE 1999 \$1750  
o, loaded, clean. 215-518-8808

ht ZX2 1998 \$2799  
uto, air, 4/11 insp, 610.476.3614

50 Pickup 1985 \$2990  
ood, full bed, (267)255-5203

ndal Elantra GLS 1995 \$1,290  
to, all power, runs great, 215-432-4580

Jeep Grand Cherokee 1994 \$1990  
insp, clean, runs good 215.432.4580

Lincoln TownCar 2002 \$3695  
blk/gray lthr, ldrd, like new 267.595.7186

OLDS Cutlass Supreme 1999 \$1300  
auto, power, 28 mpg, a/c, cd, 215.901.9902

PLYMOUTH Neon 1999 \$1495  
Auto, A/C, 33 mpg, new insp, 215.620.9383

Pontiac Boneville 2000 \$3800/obo  
warranty, all pwr, runs 100% 215.868.1183

PONTIAC Grand Am 1995 \$1550  
Auto, A/C, 85K mi, runs exc, 215.620.9383

Pontiac Grand Am GT 2000 \$3,295  
Coupe, White, Gorgeous, 610-247-1883

PT Cruiser Limited 2001 \$4995  
Red, Loaded, 78k, gorgeous 610.247.1883

# legal notices

philly.com  
anything & everything philly

### Legal Notices

#### DEPARTMENT OF THE INTERIOR

#### National Park Service

**Notice of Realty Action, Independence National Historical Park, Pennsylvania and Valley Forge National Historical Park, Pennsylvania**

**AGENCY:** National Park Service, Department of the Interior

**ACTION:** Announcement of land exchange

**SUMMARY:** This notice announces a proposed exchange of a 0.87-acre parcel of Federal land in Philadelphia County, Pennsylvania for a 7.8-acre parcel of privately owned land in Lower Providence Township, Montgomery County, Pennsylvania. The federally owned land is located within the boundary of Independence National Historical Park (INHP). The privately owned land is located within the boundary of Valley Forge National Historical Park (VAFOP).

All current compliance documents for this exchange are available on the following National Park Service (NPS) PEPC website:  
<http://parkplanning.nps.gov/documentsList.cfm?parkid=245&projectid=28017>

I. The federally owned land has been determined to be suitable for disposal by exchange. The authority for this exchange is 16 U.S.C. Sec. 4601-22(b). The Federal property to be exchanged is identified as INHP Parcel 01-181. The

### Legal Notices

### Legal Notices

#### OLD CITY SPECIAL SERVICES DISTRICT OF PHILADELPHIA

#### (A MUNICIPAL AUTHORITY)

	2009	2008
BALANCE SHEETS		
DECEMBER 31, 2009 AND 2008		
ASSET	(unaudited)	(audited)
Cash and cash equivalents	\$503,884	\$545,016
Other assets	7,762	12,119
TOTAL ASSETS	\$511,646	\$557,135
LIABILITIES AND FUND BALANCE		
Current Liabilities	\$5,000	\$47,256
Fund balance	\$506,646	\$509,879
TOTAL LIABILITIES AND FUND BALANCE	\$511,646	\$557,135

#### OLD CITY SPECIAL SERVICES DISTRICT OF PHILADELPHIA

	2009	2008
Revenues	(Budget)	(unaudited)
Total expenses	\$684,352	\$680,907
Excess (deficiency) of revenue over expenses	\$684,161	\$686,140
Fund balance, beginning	201	(3,233)
Fund balance, ending	\$506,646	\$509,879

### Proposals & Bids

### Proposals & Bids

### Proposals & Bids





Enter Tags/Keyword Here

Select Country

Enter City Here

Enter Area Here

Search

1 of 1

Please quote eAdsGallery.com when calling

Posted Date: 4/6/2010



Print



Bookmark this AD



Mail this AD to your Friend



Report Abuse

Tags: Car , For Sale, BMW Coupe

## BMW M3 Coupe - Overview

### Feature

Air Conditioner  
Power Windows  
Power Steering  
Anti-Lock Braking System  
Air-Bags (Driver | Passenger)  
CD Player

### Availability

✓  
✓  
✓  
✓  
✓ | ✓  
✓

### Specs

Overall Length  
Overall Width  
Overall Height  
Kerb Weight

### Availability

4615mm  
1804 mm  
1397 mm  
1655 kg

Car details  
with Photos on  
eAdsGallery



Tags: Car , For Sale, BMW Coupe



Classified advertisers are

ready to pay

min. \$25-50 extra

for longer Ad life

Enter Tags/Keyword Here

United States

Philadelphia

Enter Area Here

Search

1 of 1329

Please quote eAdsGallery.com when calling

Posted Date: 3/29/2010

Show All Ads



Print



Bookmark this AD



Mail

Abuse

Tags: Furniture, Curtains

Your Print Ad  
As It As on  
eAdsGallery



CO

50% off

Designer's Choice  
custom draperies,  
top treatments,  
bedding & accessories

free in-home consultation



our experts will...

- design any size, any shape
- create thousands of choices
- install— we do all the work
- guarantee for one full year

Tags: Furniture, Curtains



car dealers

United States

Philadelphia

Enter Area Here

Search

6 of 20

Please quote eAdsGallery.com when calling

Posted Date: 3/18/2010

[Show All Ads](#)

Print



Bookmark this AD



Mail this AD to your Friend



Report Abuse

Tags: Car Dealers, Autom

[<< Back](#)[Next >>](#)

Search Ads by  
Keywords &  
Location



# Honda

**A NICE PLACE TO DO BUSINESS**  
[www.conicellihonda.com](http://www.conicellihonda.com)



**NO MONEY DOWN**

## 2010 HONDA CIVIC VP

Sedan, 4 cyl, 5 Speed,  
AC, P/Windows,  
AM/FM/CD,  
Cloth Seats,  
ABS,  
6 Airbags



Model #FA1E3AEW  
MPG 26 City 34 Hwy

**NO \$167** PER MO LEASE

**MONEY DOWN** LEASE PER MONTH FOR 36 MONTHS. Total due at start \$0. (\$0 First Payment, \$0 Security Deposit, \$0 Cash Down or Trade, \$0 Bank Fee) Tax, Title & License Extra.

FEATURED SPECIAL LEASE: Closed-end lease for 2010 Civic VP 5-speed (Model #FA1E3AEW) for \$167.00 per month for 36 months with a no-equity and no-option available to customers who qualify for the APR. Super Preferred credit tier. Other restrictions are available under this offer. \$0 due at lease signing (\$0 first monthly payment and no cash down). Total monthly payment and no cash down. Total monthly payment does not include tax, license, title, registration, documentation fees, options, insurance and the like. But all leases may qualify. \$0 due at lease signing after required dealer contribution, which could affect first scheduled payment.

Subject to limited availability. New 3/1/2010 through 3/31/2010. No approved leases by American Honda Finance Corp. Closed-end lease for 2010 Civic VP 5-speed (Model #FA1E3AEW), for well-qualified lessees. But all leases will qualify. Higher lease rates apply for lessees with lower credit ratings. MSRP \$19,210.00. Not applicable and \$14,910.00. Not applicable and includes \$100 acquisition fee. Dealer contribution may vary and could affect actual lease payment. Taxes, license, title fees, options and insurance extra. Total monthly payments \$1,700. Option to purchase at lease end \$11,490.00. Lessee responsible for maintenance, excessive wear/tear and 15 cent/mi. over 12,000 miles/year for vehicles with MSRP less than \$18,000, but for vehicles with MSRP of \$18,000 or more, mileage cost is 20 cent/mi. over 12,000 miles/year. See dealer for complete details.

## 2010 HONDA CIVIC LX

Coupe, 5 Speed, AC,  
P/Windows,  
P/Locks, Cruise,  
Keyless Entry,  
6 Air Bags,  
AM/FM/CD,  
Cloth,  
Tilt Wheel



Model #FG1AAAEW  
MPG 26 City 34 Hwy

**NO \$184** PER MO LEASE

**MONEY DOWN** LEASE PER MONTH FOR 36 MONTHS. Total due at start \$0. (\$0 First Payment, \$0 Security Deposit, \$0 Cash Down or Trade, \$0 Bank Fee) Tax, Title & License Extra.

FEATURED SPECIAL LEASE: Closed-end lease for 2010 Civic LX 5-speed Transmission (Model #FG1AAAEW) for \$184.00 per month for 36 months with no-equity and no-option available to customers who qualify for the APR. Super Preferred credit tier. Other restrictions are available under this offer. \$0 due at lease signing (\$0 first monthly payment and no cash down). Total monthly payment and no cash down. Total monthly payment does not include tax, license, title, registration, documentation fees, options, insurance and the like. But all leases may qualify. \$0 due at lease signing after required dealer contribution, which could affect first scheduled payment.

Subject to limited availability. New 3/1/2010 through 3/31/2010. No approved leases by American Honda Finance Corp. Closed-end lease for 2010 Civic LX 5-speed Transmission (Model #FG1AAAEW), for well-qualified lessees. But all leases will qualify. Higher lease rates apply for lessees with lower credit ratings. MSRP \$19,110.00 (includes destination). Not applicable and \$14,910.00. Not applicable and includes \$100 acquisition fee. Dealer contribution may vary and could affect actual lease payment. Taxes, license, title fees, options and insurance extra. Total monthly payments \$1,700. Option to purchase at lease end \$11,490.00. Lessee responsible for maintenance, excessive wear/tear and 15 cent/mi. over 12,000 miles/year for vehicles with MSRP less than \$18,000, but for vehicles with MSRP of \$18,000 or more, mileage cost is 20 cent/mi. over 12,000 miles/year. See dealer for complete details.

## 2010 HONDA ACCORD LX

Sedan, 5 Speed,  
AC, P/Windows,  
P/Locks, Cruise,  
AM/FM/CD, ABS,  
6 Airbags,  
Tilt Wheel,  
Cloth Seats,  
Keyless Entry



Model #CP2E3AEW  
MPG 24 City 31 Hwy

**NO \$210** PER MO LEASE

**MONEY DOWN** LEASE PER MONTH FOR 36 MONTHS. Total due at start \$0. (\$0 First Payment, \$0 Security Deposit, \$0 Cash Down or Trade, \$0 Bank Fee) Tax, Title & License Extra.

FEATURED SPECIAL LEASE: Closed-end lease for 2010 Accord LX 5-speed (Model #CP2E3AEW) for \$210.00 per month for 36 months with no-equity and no-option available to customers who qualify for the APR. Super Preferred credit tier. Other restrictions are available under this offer. \$0 due at lease signing (\$0 first monthly payment and no cash down). Total monthly payment and no cash down. Total monthly payment does not include tax, license, title, registration, documentation fees, options, insurance and the like. But all leases may qualify. \$0 due at lease signing after required dealer contribution, which could affect first scheduled payment.

Subject to limited availability. New 3/1/2010 through 3/31/2010. No approved leases by American Honda Finance Corp. Closed-end lease for 2010 Accord LX 5-speed (Model #CP2E3AEW), for well-qualified lessees. But all leases will qualify. Higher lease rates apply for lessees with lower credit ratings. MSRP \$21,000.00. Not applicable and \$14,910.00. Not applicable and includes \$100 acquisition fee. Dealer contribution may vary and could affect actual lease payment. Taxes, license, title fees, options and insurance extra. Total monthly payments \$1,700. Option to purchase at lease end \$11,490.00. Lessee responsible for maintenance, excessive wear/tear and 15 cent/mi. over 12,000 miles/year for vehicles with MSRP less than \$18,000, but for vehicles with MSRP of \$18,000 or more, mileage cost is 20 cent/mi. over 12,000 miles/year. See dealer for complete details.

## 2010 HONDA INSIGHT LX

Automatic, AC,  
P/Windows,  
P/Locks, Cruise,  
AM/FM/CD,  
ABS, 6 Air Bags,  
Cloth Seats,  
Keyless Entry



Model #ZE2H3AEW  
MPG 40 City 43 Hwy

**NO \$220** PER MO LEASE

**MONEY DOWN** LEASE PER MONTH FOR 36 MONTHS. Total due at start \$0. (\$0 First Payment, \$0 Security Deposit, \$0 Cash Down or Trade, \$0 Bank Fee) Tax, Title & License Extra.

FEATURED SPECIAL LEASE: Closed-end lease for 2010 Insight LX Automatic (Model #ZE2H3AEW) for \$220.00 per month for 36 months with no-equity and no-option available to customers who qualify for the APR. Super Preferred credit tier. Other restrictions are available under this offer. \$0 due at lease signing (\$0 first monthly payment and no cash down). Total monthly payment and no cash down. Total monthly payment does not include tax, license, title, registration, documentation fees, options, insurance and the like. But all leases may qualify. \$0 due at lease signing after required dealer contribution, which could affect first scheduled payment.

Subject to limited availability. New 3/1/2010 through 3/31/2010. No approved leases by American Honda Finance Corp. Closed-end lease for 2010 Insight LX Automatic (Model #ZE2H3AEW), for well-qualified lessees. But all leases will qualify. Higher lease rates apply for lessees with lower credit ratings. MSRP \$21,000.00. Not applicable and \$14,910.00. Not applicable and includes \$100 acquisition fee. Dealer contribution may vary and could affect actual lease payment. Taxes, license, title fees, options and insurance extra. Total monthly payments \$1,700. Option to purchase at lease end \$11,490.00. Lessee responsible for maintenance, excessive wear/tear and 15 cent/mi. over 12,000 miles/year for vehicles with MSRP less than \$18,000, but for vehicles with MSRP of \$18,000 or more, mileage cost is 20 cent/mi. over 12,000 miles/year. See dealer for complete details.

# 0

**9%**

**APR FINANCING AVAILABLE!\***



Residential Houses For Sale

United States

Philadelphia

Enter Area Here

Search

2 of 84

Please quote eAdsGallery.com when calling

Posted Date: 3/16/2010



Print



Bookmark this AD



Mail this AD to your Friend



Report Abuse

Post new  
Ad

Next >>



**BROOMALL, PA  
361 Hastings Blvd.**

WELCOME SPRING! WELCOME TO THIS GREAT HOME IN DESIRABLE LAWRENCE PARK SECTION OF MARPLE TOWNSHIP. THIS SPLIT LEVEL HAS 4 BEDROOMS TWO FULL BATHS AND A HALF BATH AND AN EXTRA LARGE KITCHEN AND SITTING ROOM. COME LOOK FOR YOURSELF.

OFFERED BY:RE/MAX PREFERRED,  
NEWTOWN SQ.  
THERESA O'DONNELL  
610-325-4100



Tags: Residential Houses For Sale

You can  
Bookmark,  
Email or  
Print the Ad



bank

Unit

Philadelphia

Enter Area Here

Search

18 of 61

en calling

Posted Date: 2/9/2010

Show All Ads

Bookmark this AD



Mail this AD to your Friend



Report Abuse

Tags: Bank, Finance Company, Financial Services

<< Back

Next >>

Search  
similar  
Ads

Navigate  
Back

Link to  
website

Navigate  
Next

**Need a lower mortgage payment?**

**We have 100's of low rate programs**

- Refinance or FHA purchase
- Payoff high rate loans
- Get cash out up to \$200,000
- Rates as low as 4.25% apr
- No application fee
- No cash due at closing
- No payments til Spring
- Lowest available payments

**FREE HOME APPRAISAL**

**Get pre-approved today! Call 800-757-1990**

\*paid after loan funds, call for details

 **Net Equity Financial** 

Licensed PA Dept. of Banking NMLS #144477

[www.NetEquityLoans.com](http://www.NetEquityLoans.com)

These and more features....

How much will it  
cost to you?

We provide  
Software as a Service (SaaS)  
Model

No Setup Cost

No Software Cost

No Maintenance Cost





Pay as you go...

## Basic Package

Invest only \$1 per page



And earn \$200 or  
more...



What is the setup time?

3-5 business days

And finally one  
more thing ...

Using our CMS tools  
you can earn more  
from your current  
website



Instead of Google Ads,  
display your  
print classified Ads  
on your website

# The New York Times

Tuesday, April 6, 2010 Last Update: 1:51 AM ET

Switch to the Global Edition for an international perspective on news, business, sports and more.

Search



Try the New  
Times Skimmer

Try Times Reader 2.0 | Personalize Your Weather

Switch to  
Global Edition »  
JOBS  
REAL ESTATE  
AUTOS  
ALL CLASSIFIEDS

WORLD  
U.S.  
POLITICS  
N.Y./REGION  
BUSINESS  
TECHNOLOGY  
SPORTS  
SCIENCE  
HEALTH  
OPINION  
ARTS  
Books  
Movies  
Music  
Television  
Theater  
STYLE  
Dining & Wine  
Fashion & Style  
Home & Garden

## Obama Limits When U.S. Would Use Nuclear Arms

By DAVID E. SANGER and  
PETER BAKER

The new American nuclear strategy will narrow the conditions under which the United States would use nuclear weapons, with the exception of "outliers like Iran and North Korea."

• Excerpts: Obama Interview |  
New Nuclear Strategy

## Death Toll Hits 12 in West Virginia Coal Mine Explosion

By IAN URBINA 5 minutes ago

Rescuers searched for 10 other miners on Tuesday after an explosion ripped through a coal mine 30 miles south of Charleston.



## N.C.A.A. TOURNAMENT



Mark Blinch/Reuters

## Duke Reclaims the Crown

By PETE THAMEL 58 minutes ago

Duke defeated Butler, 61-59, to win its fourth national title, but the Blue Devils were pushed to the limit.

• Post a Comment | Duke Threesome Captures Title It Was Missing

### Final Bow

• Shane Dawson, YouTube's Comic for the Under-30 Set

### AUTOMOBILES »

• New York Auto Show: Amid Signs of Spring, Hints of Green  
• New York Auto Show: Shooting the Show's Stars  
• New York Auto Show: A Smart iPhone App, Literally

• Can Animals Be Gay?

• Norris Church Mailer: The Last Wife

• A Closer Reading of Roman Vishniac

### T MAGAZINE »

• Seoul Survivor | A Front-Row Report From Korean Fashion Week  
• The (Teen) Insider | Nicklas Skovgaard  
• Artifacts | Kruger World

### OPINION »

#### Fish: Marketplace of Ideas

Freedom of speech, metaphor and literal equivalence in the Supreme Court's recent campaign-funding decision.

• Brooks: Relax, We'll Be Fine | Comments  
• Herbert: Forgotten Heroes  
• Cohen: Season of Renewal  
• Editorial: Tax Double-Dipping  
• Op-Ed: Allergy-Free N.Y.

### SCIENCE TIMES »

#### A Prologue for Cities

A prehistoric culture in Syria gave rise to cities and the invention of writing.

• Post a Comment

### HEALTH »

#### Saving Lives in Obscurity

A book looks at an ar

**FASHION GADGETS GEAR**  
**GILT GROUPE**  
UP TO 70% OFF  
Join Now

### MARKETS »

At 1:55 AM ET

JAPAN	CHINA
Nikkei	HangSeng
11,272.52	21,537.00
-66.78	3,155.10



## Ads By Google

What's this?

### New Chevrolet Aveo

Remote Keyless Entry, Alloy Wheels, Leather Upholstery. Test Drive Now!  
Chevrolet.co.in/Aveo

# The New York Times

Tuesday, April 6, 2010 Last Update: 1:51 AM ET

[Switch to the Global Edition](#) for an international perspective on news, business, sports and more.



Try the New  
Times Skimmer

[Try Times Reader 2.0](#) | [Personalize Your Weather](#)

Switch to  
[Global Edition](#) »  
[JOBS](#)  
[REAL ESTATE](#)  
[AUTOS](#)  
[ALL CLASSIFIEDS](#)

[WORLD](#)  
[U.S.](#)  
[POLITICS](#)  
[N.Y./REGION](#)  
[BUSINESS](#)  
[TECHNOLOGY](#)  
[SPORTS](#)  
[SCIENCE](#)  
[HEALTH](#)  
[OPINION](#)  
[ARTS](#)  
[Books](#)  
[Movies](#)  
[Music](#)  
[Television](#)  
[Theater](#)  
[STYLE](#)  
[Dining & Wine](#)  
[Fashion & Style](#)  
[Home & Garden](#)

## Obama Limits When U.S. Would Use Nuclear Arms

By DAVID E. SANGER and  
PETER BAKER

The new American nuclear strategy will narrow the conditions under which the United States would use nuclear weapons, with the exception of "outliers like Iran and North Korea."

• Excerpts: Obama Interview |  
New Nuclear Strategy

## Death Toll Hits 12 in West Virginia Coal Mine Explosion

By IAN URBINA 5 minutes ago

Rescuers searched for 10 other miners on Tuesday after an explosion ripped through a coal mine 30 miles south of Charleston.



## N.C.A.A. TOURNAMENT



Mark Blinch/Reuters

## Duke Reclaims the Crown

By PETE THAMEL 58 minutes ago

Duke defeated Butler, 61-59, to win its fourth national title, but the Blue Devils were pushed to the limit.

• [Post a Comment](#) | [Duke Threesome Captures Title It Was Missing](#)

### Final Bow

• Shane Dawson, YouTube's Comic for the Under-30 Set

### AUTOMOBILES »

• New York Auto Show: Amid Signs of Spring, Hints of Green  
• New York Auto Show: Shooting the Show's Stars  
• New York Auto Show: A Smart iPhone App, Literally

• Can Animals Be Gay?

• Norris Church Mailer: The Last Wife

• A Closer Reading of Roman Vishniac

### T MAGAZINE »

• Seoul Survivor | A Front-Row Report From Korean Fashion Week  
• The (Teen) Insider | Nicklas Skovgaard  
• Artifacts | Kruger World

### OPINION »

#### Fish: Marketplace of Ideas

Freedom of speech, metaphor and literal equivalence in the Supreme Court's recent campaign-funding decision.

• Brooks: Relax, We'll Be Fine | [Comments](#)  
• Herbert: Forgotten Heroes  
• Cohen: Season of Renewal  
• Editorial: Tax Double-Dipping  
• Op-Ed: Allergy-Free N.Y.

### SCIENCE TIMES »

#### A Prologue for Cities

A prehistoric culture in Syria gave rise to cities and the invention of writing.

• [Post a Comment](#)

### HEALTH »

#### Saving Lives in Obscurity

A book looks at an arm of

**FASHION  
GADGETS  
GEAR**  
**GILT  
GROUPE**  
UP TO 70% OFF  
[Join Now](#)

### MARKETS »

At 1:55 AM ET

JAPAN	CHINA
Nikkei	HangSeng
11,272.52	21,537.00
-66.78	Closed for holiday
-0.59%	-2.86
	-0.09%

Data delayed at least 15 minutes



## Ads By Google

[What's this?](#)

### New Chevrolet Aveo

Remote Keyless Entry, Alloy Wheels, Leather Upholstery. Test Drive Now!  
[Chevrolet.co.in/Aveo](#)

Replace it..





# The New York Times

Tuesday, April 6, 2010 Last Update: 1:51 AM ET

Switch to the Global Edition for an international perspective on news, business, sports and more.

Search



Try the New  
Times Skimmer

Try Times Reader 2.0 | Personalize Your Weather

Switch to  
Global Edition

JOBS  
REAL ESTATE  
AUTOS  
ALL CLASSIFIEDS

WORLD  
U.S.  
POLITICS  
N.Y./REGION  
BUSINESS  
TECHNOLOGY  
SPORTS  
SCIENCE  
HEALTH  
OPINION  
ARTS  
Books  
Movies  
Music  
Television  
Theater  
STYLE  
Dining & Wine  
Fashion & Style  
Home & Garden

## Obama Limits When U.S. Would Use Nuclear Arms

By DAVID E. SANGER and  
PETER BAKER

The new American nuclear strategy will narrow the conditions under which the United States would use nuclear weapons, with the exception of "outliers like Iran and North Korea."

Excerpts: Obama Interview |  
New Nuclear Strategy

## Death Toll Hits 12 in West Virginia Coal Mine Explosion

By IAN URBINA 5 minutes ago

Rescuers searched for 10 other miners on Tuesday after an explosion ripped through a coal mine 30 miles south of Charleston.



## N.C.A.A. TOURNAMENT



Mark Blinch/Reuters

## Duke Reclaims the Crown

By PETE THAMEL 58 minutes ago

Duke defeated Butler, 61-59, to win its fourth national title, but the Blue Devils were pushed to the limit.

Post a Comment | Duke Threesome Captures Title It Was Missing

### Final Bow

Shane Dawson, YouTube's Comic for the Under-30 Set

Can Animals Be Gay?

Norris Church Mailer: The Last Wife

A Closer Reading of Roman Vishniac

### AUTOMOBILES

New York Auto Show: Amid Signs of Spring, Hints of Green

New York Auto Show: Shooting the Show's Stars

New York Auto Show: A Smart iPhone App, Literally

### T MAGAZINE

Seoul Survivor | A Front-Row Report From Korean Fashion Week

The (Teen) Insider | Nicklas Skovgaard

Artifacts | Kruger World

### OPINION

#### Fish: Marketplace of Ideas

Freedom of speech, metaphor and literal equivalence in the Supreme Court's recent campaign-funding decision.

- Brooks: Relax, We'll Be Fine | Comments
- Herbert: Forgotten Heroes
- Cohen: Season of Renewal
- Editorial: Tax Double-Dipping
- Op-Ed: Allergy-Free N.Y.

### SCIENCE TIMES

#### A Prologue for Cities

A prehistoric culture in Syria gave rise to cities and the invention of writing.

Post a Comment

### HEALTH

#### Saving Lives Obscurity

A book looks at

...with your own  
print Classified  
Ad & earn more



LEXUS

ES 300	2000	\$6200
Platinum package, new tires, brakes & rotors, 87K miles, Call 609-707-9103		
SC 430 Conv.	2005	\$25,575 obo
45K mi, exc cond, loaded, 215-837-0037		



We are now  
ready for iPad  
solutions along  
with Kindle &  
Mobile



# The Philadelphia Inquirer

Wednesday, April 2, 2008 • Locally Owned & Independent Since 2006 • 75 cents



Cody receives Anderson Award

Community, social ethics, and civic-minded Phila. institutions honor Anderson Award recipient.

## Bid to toll I-80 is denied

Pa. needs \$470 million to cover loss in revenue

**By Paul Treisman**  
PHILADELPHIA — Federal highway officials on Tuesday again rejected Pennsylvania's application to place tolls on I-80, ending the state's most recent attempt to raise hundreds of millions of dollars a year for roads, bridges and mass transit projects around the state. The federal denial is a setback for the state and a special session of the legislature to fill the \$470 million gap left in the proposed budget by the federal highway administration decision. It said the tolls would be applied to all by July 1, the start of the new fiscal year. In Philadelphia, the federal decision would mean about \$100 million less for traffic projects such as a "tunnel-and" bus system, a redesigned city hall and new transit lines, and efforts to replace outdated power systems for the city's transit system, according to state officials. The tolling loss is \$470 million a year.

**High 80, Low 41**  
The start day of July-like heat and clear skies with strong winds Thursday night. 80-41 forecast, W.D.

The Board of Revision of Taxes "appears to be out of control. President Obama had to deal with pirates, and we have to deal with the BRT." Mayor Nutter

## Nutter Seeks BRT Pay Cuts

**By Patrick Sullivan**  
PHILADELPHIA — Calling the proposed budget of the Board of Revision of Taxes a "major threat," Mayor Nutter said Tuesday he would immediately attempt to slash their salaries and other costs of their budgeting process. "The BRT board appears to be out of control. President Obama had to deal with pirates, and we have to deal with the BRT," Nutter said. The mayor's remarks came a day after the BRT had broken off a joint-negotiations agreement that gave Nutter's staff the right to vote over the deeply troubled property assessment agency. Under the agreement, which had an initial term of six months, the board's role was reduced to handling appeals of property assessments, a job for which the mayor's staff would be paid each the past three years. The role of the independent agency was under the mayor's authority for the first time. Nutter appointed former executive director Richard Shapiro to lead the BRT and asked

## Tragedy at W. Va. mine



After looking for brother was killed, Nutter's younger son was also trapped by a blast. One brother, Nutter Jr., was also trapped in a mine in two weeks, and driving the 2008. Five people are missing.

## Slim hope, too much pain

**By Lawrence Rothenberg**  
PHILADELPHIA — It's a day after the explosion in south-west Virginia, desperate rescue efforts began today to find the 10 bodies of missing persons. The rescue effort is in search of the bodies, but the rescue effort is still in progress. "I don't want to give anybody any false hope," he said. "But by golly, if

## Chesco abra mater solves a late bloomer. Honors for a Pa. warrior

By Tom Ichniowski

Shapiro to lead the BRT and asked him to begin contacting a property assessment agency that had been one of the best assessments and as far as the nation. The act reversing the agreement the BRT board did itself back in 2006. (See B2-B3 on B3.)

## Comcast wins Web traffic battle

The FCC backs authority over broadband, court rules

**By Mark Hines**  
WASHINGTON — A decision by the Federal Communications Commission on Tuesday gave Comcast Corp. the winning high-speed Internet traffic in 2008. The commission's decision, which is the first of its kind, says the FCC's authority over broadband is not limited. It was viewed as a big victory for Comcast, which has been fighting the FCC's authority over broadband. The commission's decision says that the FCC's authority over broadband is not limited. It was viewed as a big victory for Comcast, which has been fighting the FCC's authority over broadband. The commission's decision says that the FCC's authority over broadband is not limited. It was viewed as a big victory for Comcast, which has been fighting the FCC's authority over broadband.

## Oldest N.J. brother still cut off from kin

By Tom Ichniowski

Pad

9:41 AM

Home

Search

Categories

Settings

## Butkovitz cites charter school profiteering

By Martha Woodall  
INQUIRER STAFF WRITER

City Controller Alan Butkovitz's investigation of 13 Philadelphia charter schools found repeated examples of complex real estate arrangements in which charters leased or rented facilities from related non-profit organizations.

"The way the charter law is written and not enforced--there is a gigantic loophole through which people can profiteer," Butkovitz said. "This is not supposed to be a vehicle for maximizing profit for operators and related





Decision is yours:

Charge for online subscription?

or

Explore new Revenue Models &  
increase your eReadership?

By sharing we grow...



**ePaperGallery is built upon  
Social Networking platform of MyVishwa.com**

Please contact: Mandar



[info@myvishwa.com](mailto:info@myvishwa.com)



1-215-264-4995

[ePaperGallery.com](http://ePaperGallery.com)

**Thank you !!**